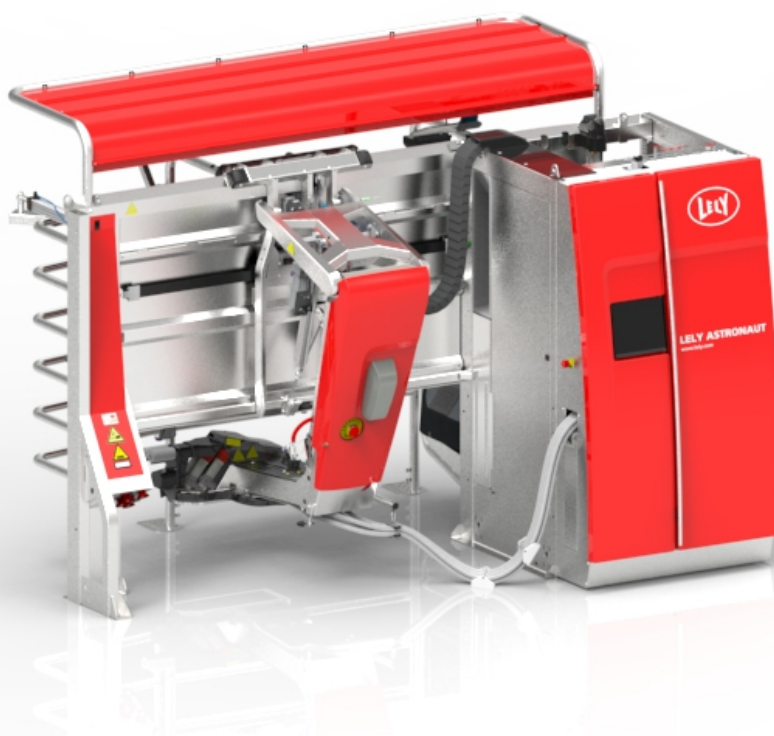


Lely Astronaut A5

Tool Set



Parts list

5.1005.8572.0 F

English Original





INTENTIONALLY BLANK

Preface

Applicability

| Type number: | As from serial number: |
|---------------|------------------------|
| 5.1X05.00XX-X | 0003242094 |

Spare Parts

When ordering spare parts it is important that you are aware of the type and serial number of your machine. Use only genuine LELY parts.

Criticality

Criticality = Bulk, 0, 1, 2

- Bulk = Bulk item.
- 0 = Not critical.
- 1 = Not very critical.
- 2 = Critical.

Explanation of Signs Used in the Parts List

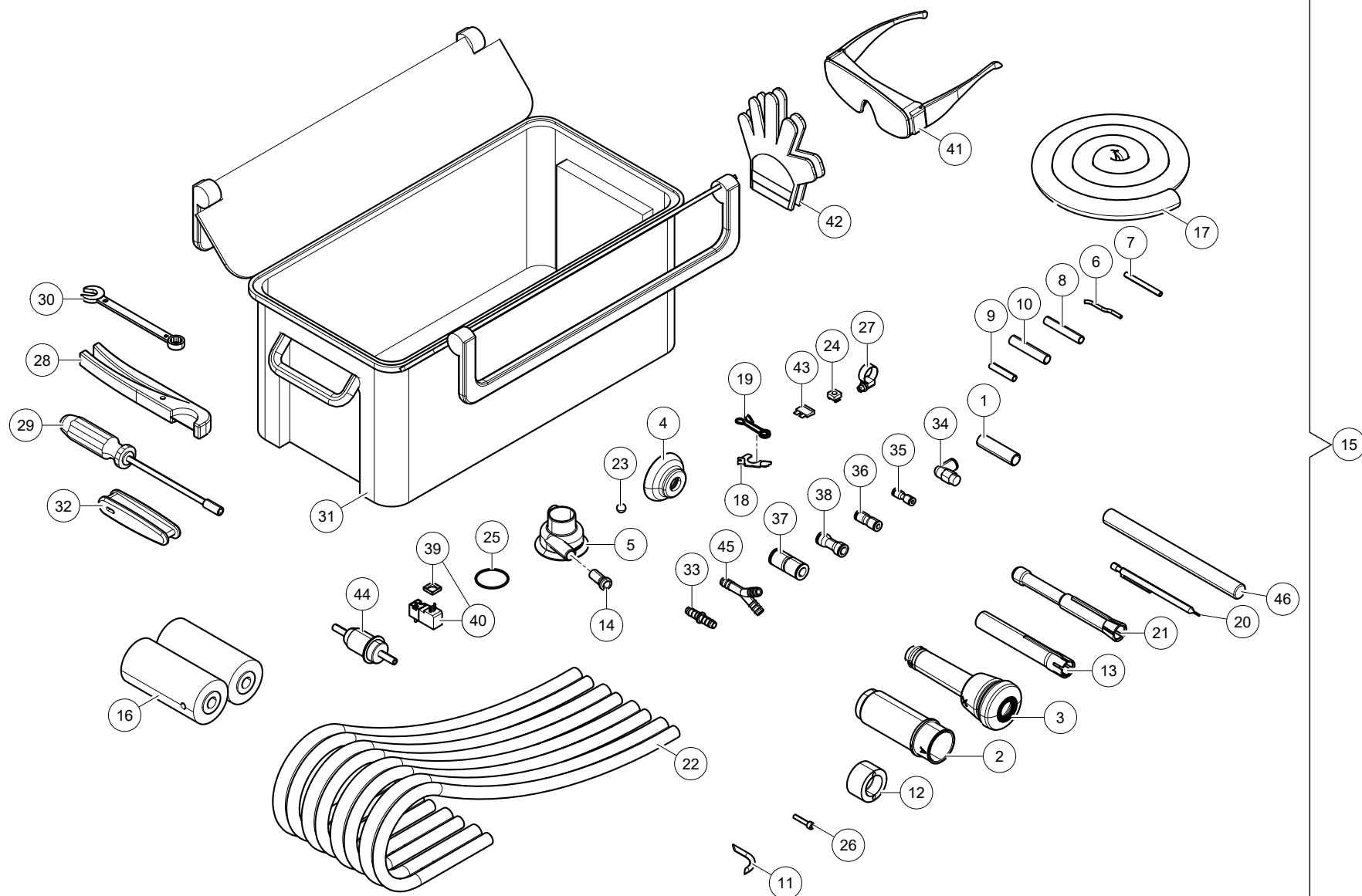
| | |
|------------|---|
| [R] / [RH] | By RH or LH version the position of the part is meant, seen from the rear of the machine. |
| [L] / [LH] | |
| [~] | E.g.: LH version is not similar to the RH version, which is actually shown. |
| [#] | Not available separately. |

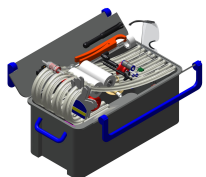


INTENTIONALLY BLANK

Table of Contents

| | | |
|----------|---|----------|
| A | Tools | 6 |
| A-1 | Toolbox | 6 |
| A-2 | Teat cup sleeve & Teat liner measurement tool | 10 |
| A-3 | Tools General | 12 |
| A-4 | Torque Screwdriver + bit | 14 |
| A-5 | M12 Breakout Box Set | 16 |
| A-6 | Tool Overload System (RU gas springs) | 18 |
| A-7 | Tool Tensioner Removal (Y-drive) | 20 |
| A-8 | Tool Pullypull | 22 |
| A-9 | Brush Seal Repair Tool | 24 |
| A-10 | Tool Removal Bearing Exit Gate | 26 |
| A-11 | Tools for Grazeway and Separation Gate Cylinder | 28 |
| A-12 | Tool Starlock | 30 |
| A-13 | Tool Actuator Milk Valves | 32 |
| A-14 | Set Vacuum and Pulsation Tests | 34 |
| A-15 | Kit PT-VI (incl. airflow meter) | 36 |
| A-16 | SCR Test Tag | 38 |
| A-17 | Hoisting Beam (A4/A5) | 40 |
| A-18 | Wheel ass. (A4/A5) | 42 |
| A-19 | Analytical Tool Kit | 44 |





Astronaut A5

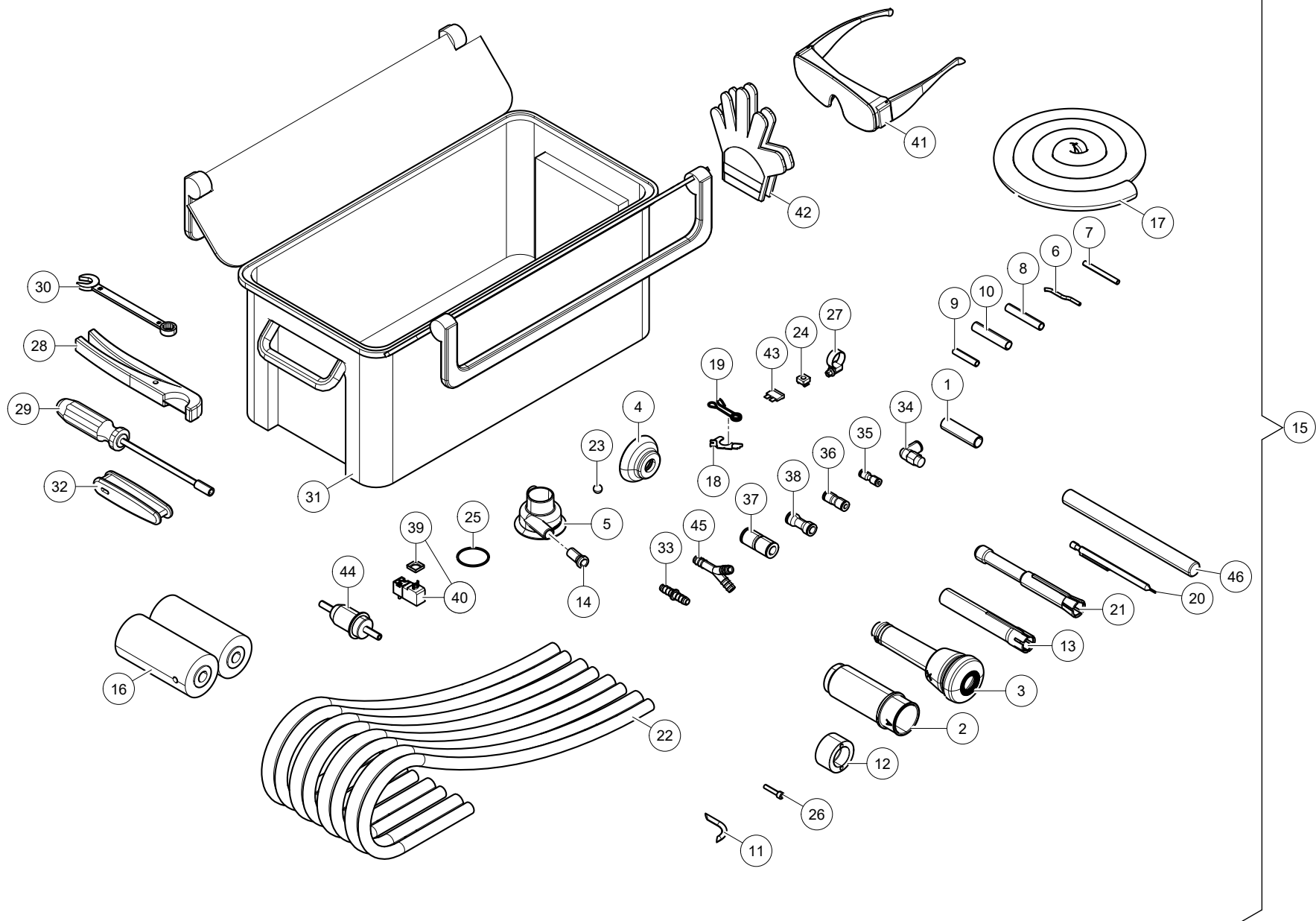
Tools

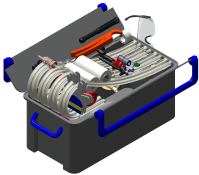
5.1X05.00XX-X

0003242094

| Ref. | Part No | Qty. | Description | Techn. info | Criticality | Remark |
|------|---------------|------|------------------------------|-------------------------|-------------|--------|
| 1 | 5.1001.6659.0 | 2 | Coupling piece | | | |
| 2 | 5.1002.0543.0 | 1 | Teat cup sleeve | | | |
| 3 | 5.1002.0559.0 | 4 | Teat liner | 21mm | | |
| 4 | 5.1003.0678.0 | 1 | Jetter cap | | | |
| 5 | 5.1003.0749.0 | 1 | Rinse head | | | |
| 6 | 9.1138.0062.3 | 1 | Tube | 4mm PA BLACK | | |
| 7 | 9.1138.0063.4 | 1 | Tube | ZWART PA 6mm L=3000mm | | |
| 8 | 9.1138.0154.4 | 1 | Tube | ZWART PUN-H 10mm L=500 | | |
| 9 | 9.1138.0065.6 | 1 | Hose | 8mm PA BLUE | | |
| 10 | 9.1138.0155.5 | 1 | Tube | BLAUW PUN-H 12mm L=500 | | |
| 11 | 5.1003.1383.0 | 4 | Cord | L=3000mm | | |
| 12 | 5.1003.1494.0 | 2 | Centring cup | | | |
| 13 | 5.1003.9014.0 | 1 | Teat liner installation tool | | | |
| 14 | 5.1004.1078.0 | 2 | Restrictor tube | | | |
| 15 | 5.1004.1445.0 | 1 | Lely Astronaut toolbox | | | |
| 16 | 5.1004.1446.0 | 1 | Cleaning brush set | 2x 5.1004.1437.0 | | |
| 17 | 9.1185.0013.3 | 1 | Hose | 14x25mm SILICON | | |
| 18 | 5.1005.2896.0 | 4 | Plate | | | |
| 19 | 5.1005.2897.0 | 4 | Spring | | | |
| 20 | 5.1080.0800.0 | 1 | Tool | 0.7 mm | | |
| 21 | 5.9000.1343.0 | 1 | Tool | Liner and sleeve pull | | |
| 22 | ##### | 1 | Not separately | | | |
| 23 | 9.1021.0010.3 | 4 | Ball | ø11 PP | | |
| 24 | 9.1036.0099.0 | 2 | Nut | M6 | | |
| 25 | 9.1043.0046.3 | 2 | O-ring | 37.82x1.78 NBR 70°Shore | | |
| 26 | 9.1057.0101.2 | 2 | S.h. bolt | M5x25 DIN912-A2 s/s | | |
| 27 | 9.1066.0091.0 | 8 | Hose clamp | 16-27 s/s | | |
| 28 | 9.1074.0022.4 | 1 | Tool | | | |
| 29 | 9.1074.0023.5 | 1 | Tool | 7mm | | |
| 30 | 9.1074.0025.0 | 1 | Tool | 13mm | | |
| 31 | 9.1074.0026.1 | 1 | Toolbox | | | |
| 32 | 9.1074.0042.3 | 1 | Tool | | | |
| 33 | ##### | 2 | Not separately | | | |
| 34 | 9.1138.0039.1 | 1 | Plug-in coupling | 1/4"x4mm (└) | | |
| 35 | 9.1138.0092.5 | 2 | Plug-in coupling | 4-4mm () | | |
| 36 | 9.1138.0093.6 | 2 | Plug-in coupling | 6-6mm () | | |

CONTINUED

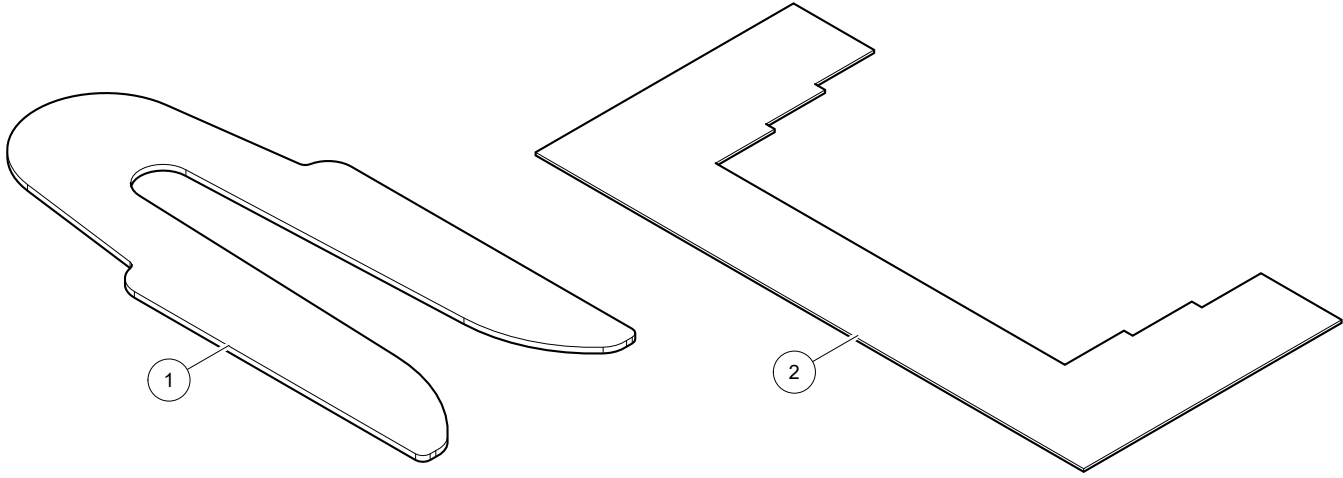




Astronaut A5 Tools 5.1X05.00XX-X 0003242094

| Ref. | Part No | Qty. | Description | Techn. info | Criticality | Remark |
|------|---------------|------|-----------------------|------------------------------|-------------|--------|
| 37 | 9.1138.0192.0 | 2 | Plug-in coupling | 12-12mm () | | |
| 38 | 9.1138.0194.2 | 2 | Plug-in coupling | 10-10mm () | | |
| 39 | 9.1138.1308.0 | 1 | Seal | | | |
| 40 | 9.1138.1362.0 | 1 | Valve | 3/2 NC Valve 10B NW1.6 24VDC | | |
| 41 | 9.1185.0191.6 | 1 | Protective spectacles | | | |
| 42 | 9.1185.0192.0 | 1 | Safety gloves | | | |
| 43 | 9.1186.0400.0 | 1 | Fuse | Fuse 30A | | |
| 44 | 9.1189.0213.0 | 4 | Filter | | | |
| 45 | 9.2018.0077.0 | 4 | Y-piece | 10-10-10-mm | | |
| 46 | 9.9004.0075.0 | 4 | sTDS test tool | Black | | |



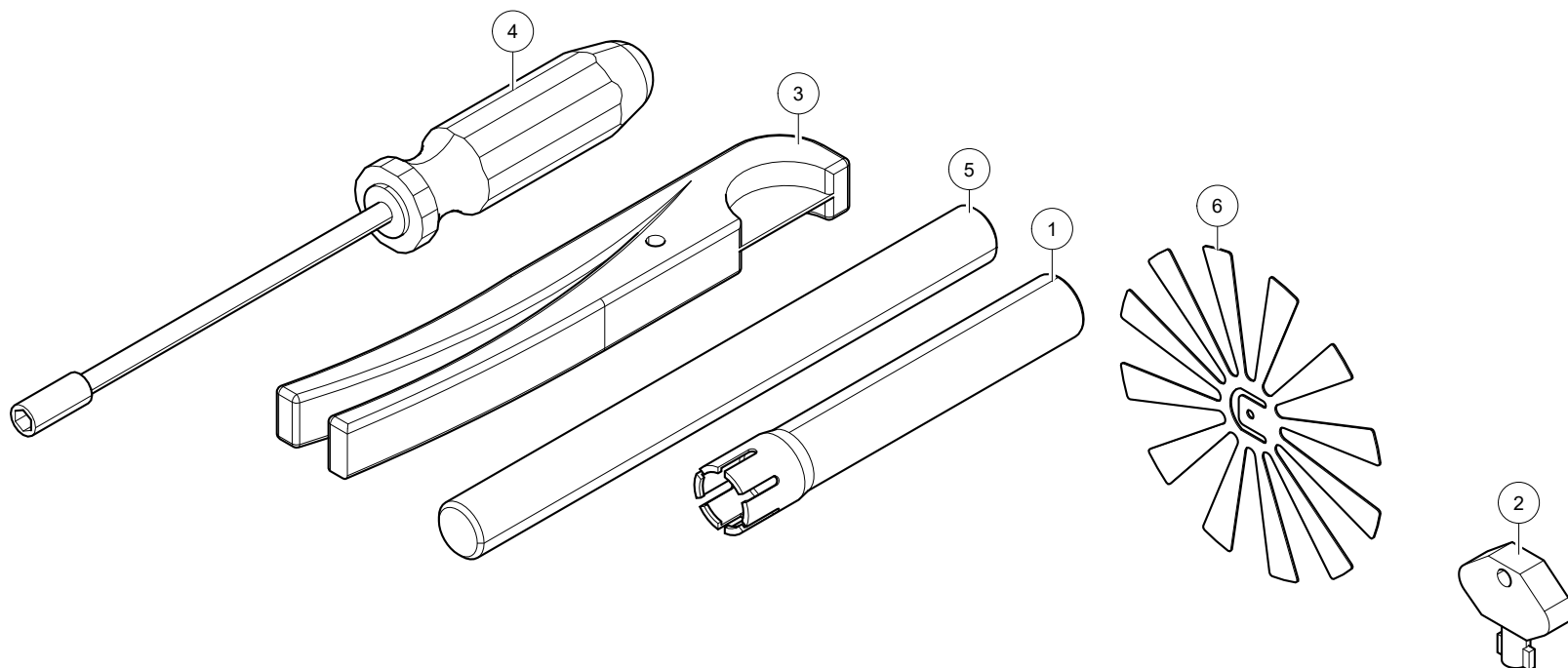




Astronaut A5 Tools 5.1X05.00XX-X 0003242094

| Ref. | Part No | Qty. | Description | Techn. info | Criticality | Remark |
|------|---------------|------|-------------|-----------------------|-------------|--------|
| 1 | 5.1005.3885.0 | 1 | Screen | TEAT MEASUREMENT TOOL | | |
| 2 | 5.1005.5190.0 | 1 | Tool | CUP MEASUREMENT TOOL | | |



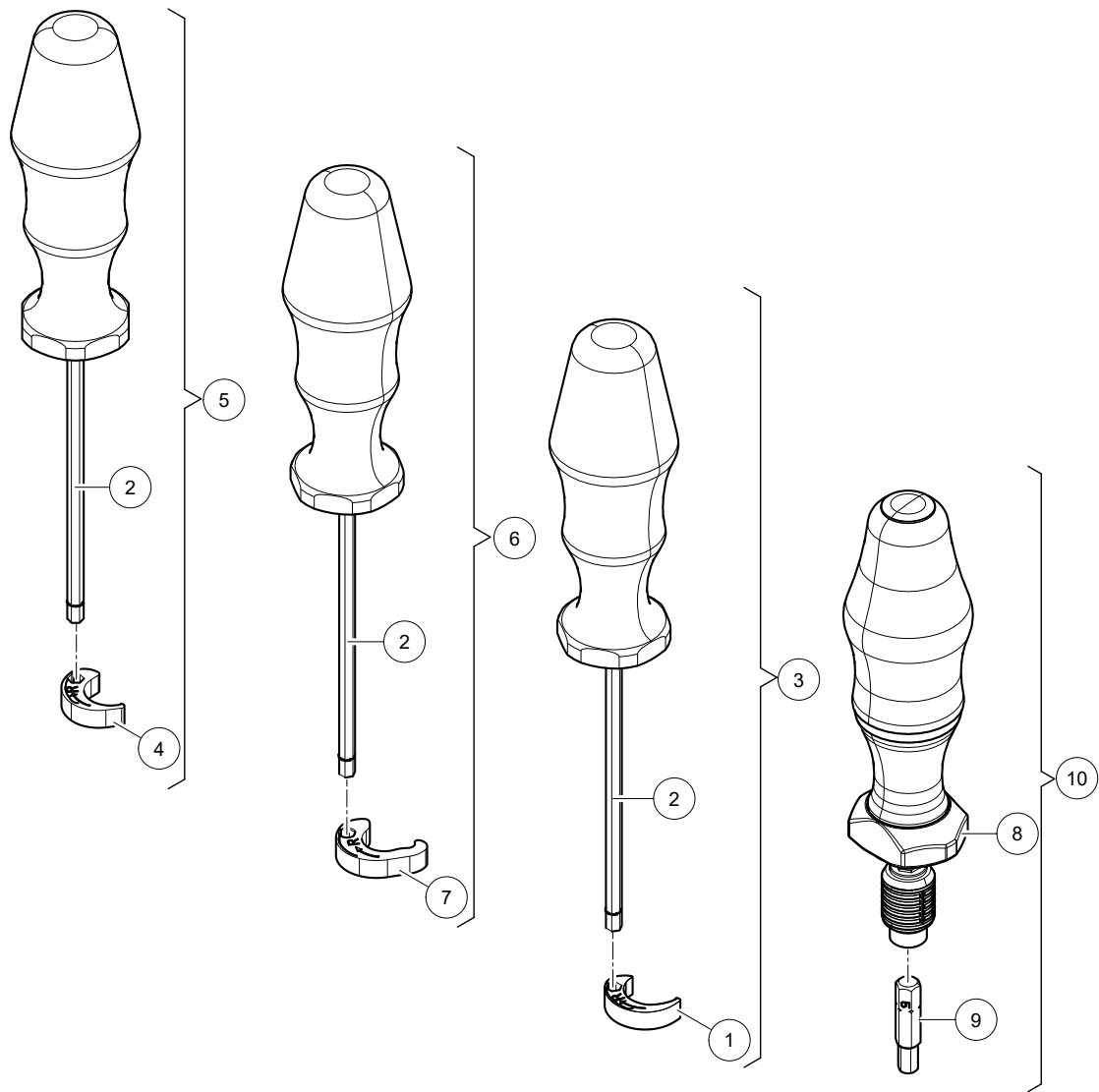




Astronaut A5 Tools 5.1X05.00XX-X 0003242094

| Ref. | Part No | Qty. | Description | Techn. info | Criticality | Remark |
|------|---------------|------|------------------------------|----------------------------|-------------|--------|
| 1 | 5.1003.9014.0 | 1 | Teat liner installation tool | | | |
| 2 | 5.9000.0725.0 | 1 | Key | Door lock CRS+/MFB s/s | | |
| 3 | 9.1074.0022.4 | 1 | Tool | Hose scissors | | |
| 4 | 9.1074.0023.5 | 1 | Tool | Flexible screw-driver 7mm | | |
| 5 | 9.9004.0075.0 | 1 | sTDS test tool | Black | | |
| 6 | 9.9004.0216.0 | 1 | Spacer | For milkpump 5-1005-2610-0 | | |



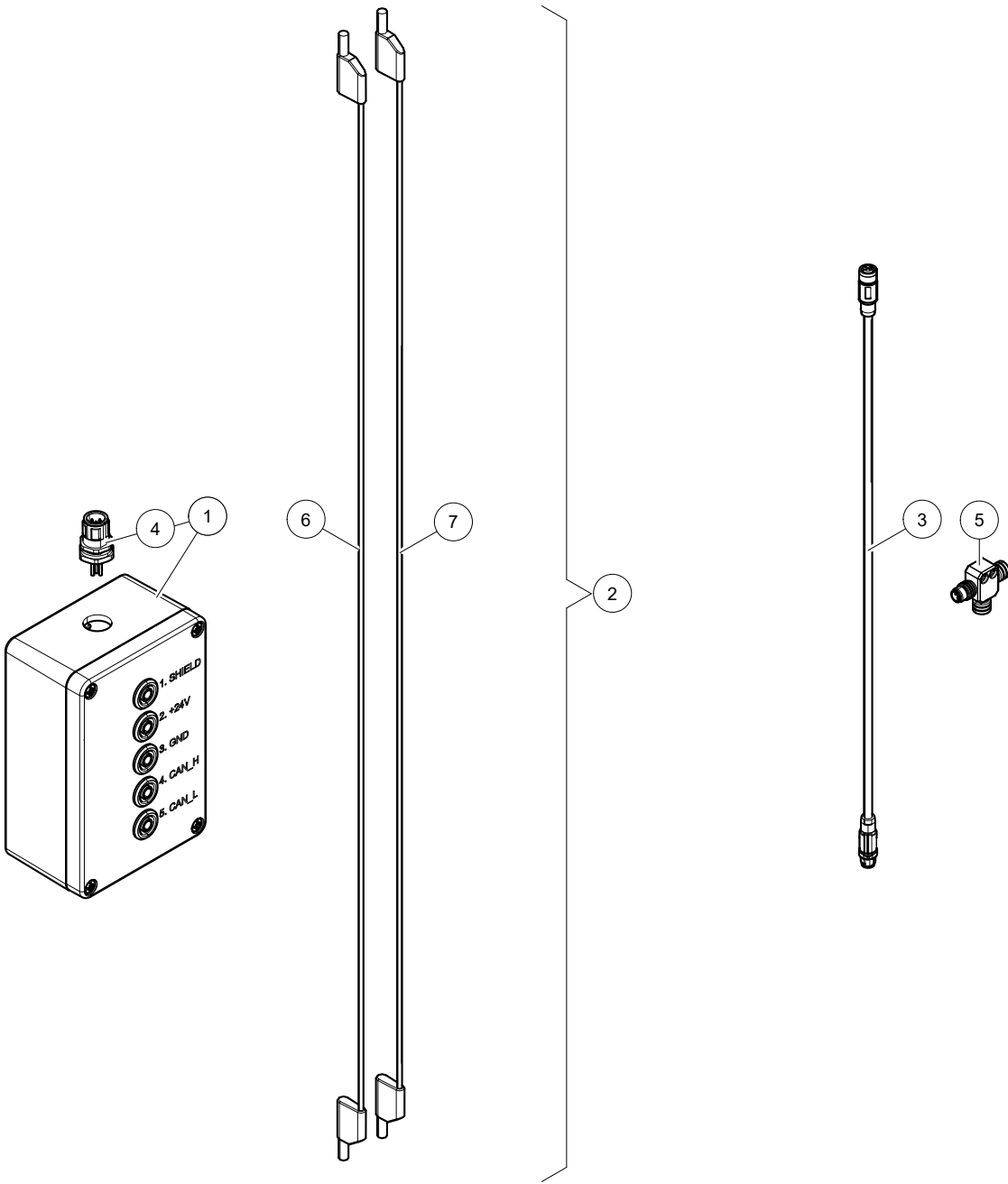


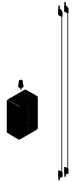


Astronaut A5 Tools 5.1X05.00XX-X 0003242094

| Ref. | Part No | Qty. | Description | Techn. info | Criticality | Remark |
|------|---------------|------|----------------|----------------------------------|-------------|--------|
| 1 | 5.9000.1146.0 | 1 | Tool | ø15 Bit FOR SAC M12 CABLE | | |
| 2 | ##### | 3 | Not separately | | | |
| 3 | 5.9000.1148.0 | 1 | Tool | M12 TORQUE SCREWDRIVER + ø15 BIT | | |
| 4 | 5.9000.1149.0 | 1 | Tool | ø16 BIT FOR SAC M12-D16 CABLE | | |
| 5 | 5.9000.1150.0 | 1 | Tool | M12 TORQUE SCREWDRIVER + ø16 BIT | | |
| 6 | 5.9000.1152.0 | 1 | Tool | M12 TORQUE + W14 | | |
| 7 | 5.9000.1153.0 | 1 | Tool | M12 Bit (W14) | | |
| 8 | ##### | 1 | Not separately | | | |
| 9 | ##### | 1 | Not separately | | | |
| 10 | 5.9000.1156.0 | 1 | Tool | Torque tool + 5mm bit | | |



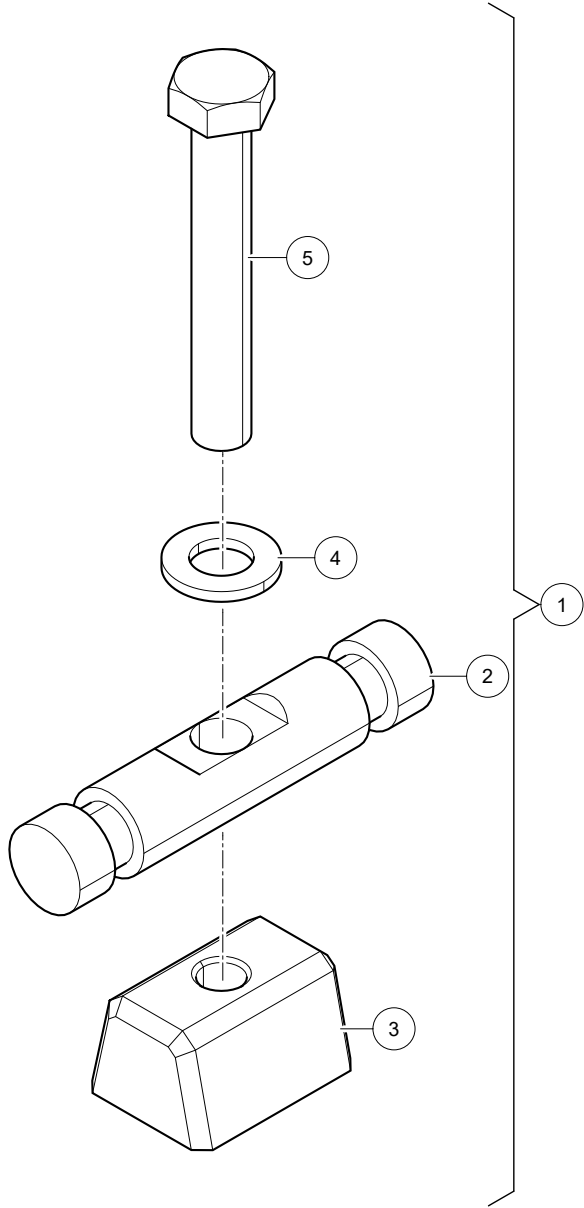




Astronaut A5 Tools 5.1X05.00XX-X 0003242094

| Ref. | Part No | Qty. | Description | Techn. info | Criticality | Remark |
|------|---------------|------|----------------------|------------------------------|-------------|--------|
| 1 | ##### | 1 | Not separately | | | |
| 2 | 5.1005.5714.0 | 1 | M12 breakout box set | | | |
| 3 | 6.2001.1050.0 | 1 | Cable | SAC-5P-MS/0.5-920/FS SCO | | |
| 4 | 9.1186.0687.0 | 1 | Connector | | | |
| 5 | 9.1186.1018.0 | 1 | Connector | | | |
| 6 | ##### | 1 | Not separately | 4 mm PLUG, RED, 32A, 1000V | | |
| 7 | ##### | 1 | Not separately | 4 mm PLUG, BLACK, 32A, 1000V | | |



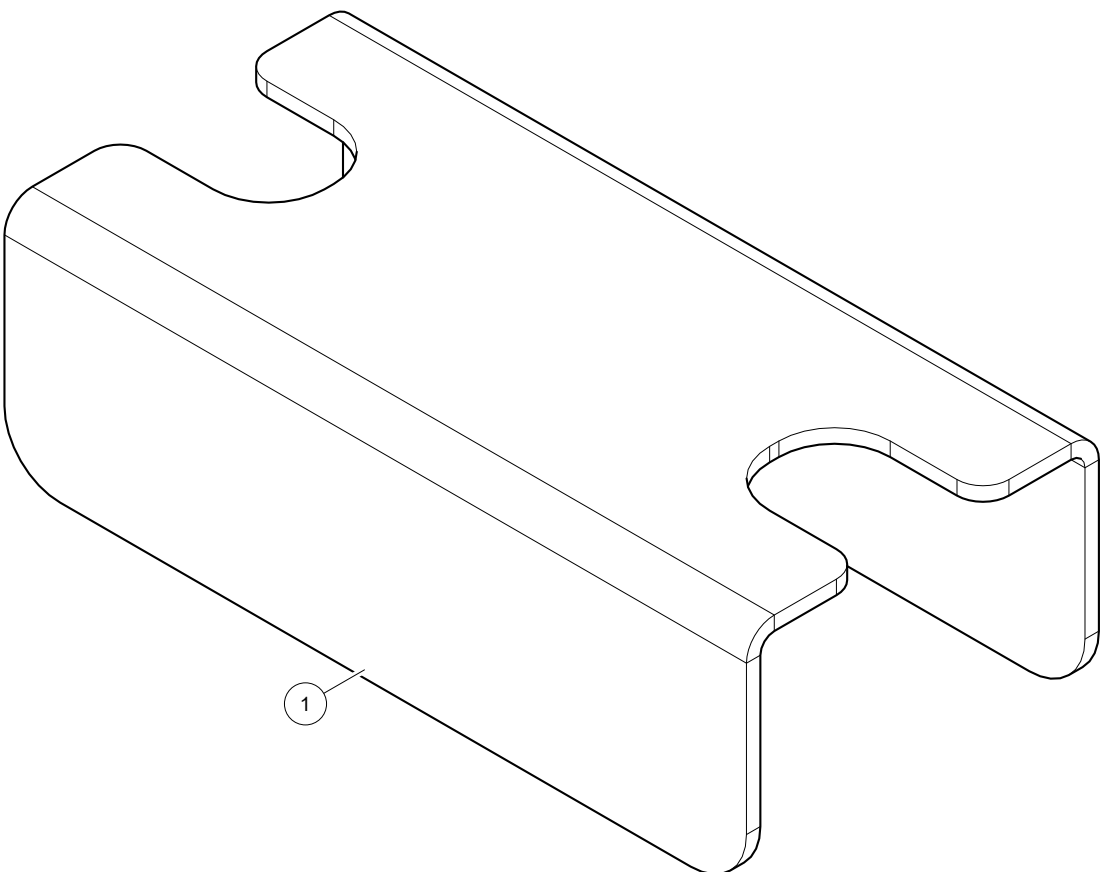




Astronaut A5 Tools 5.1X05.00XX-X 0003242094

| Ref. | Part No | Qty. | Description | Techn. info | Criticality | Remark |
|------|---------------|------|----------------------|-------------------|-------------|--------|
| 1 | 5.9000.1143.0 | 1 | Tool overload system | | | |
| 2 | ##### | 1 | Not separately | | | |
| 3 | ##### | 1 | Not separately | | | |
| 4 | 9.1048.0012*6 | 1 | Washer | A13 DIN125-St | | |
| 5 | 9.1113.0539.6 | 1 | Bolt | M12x80 DIN933-8.8 | | |



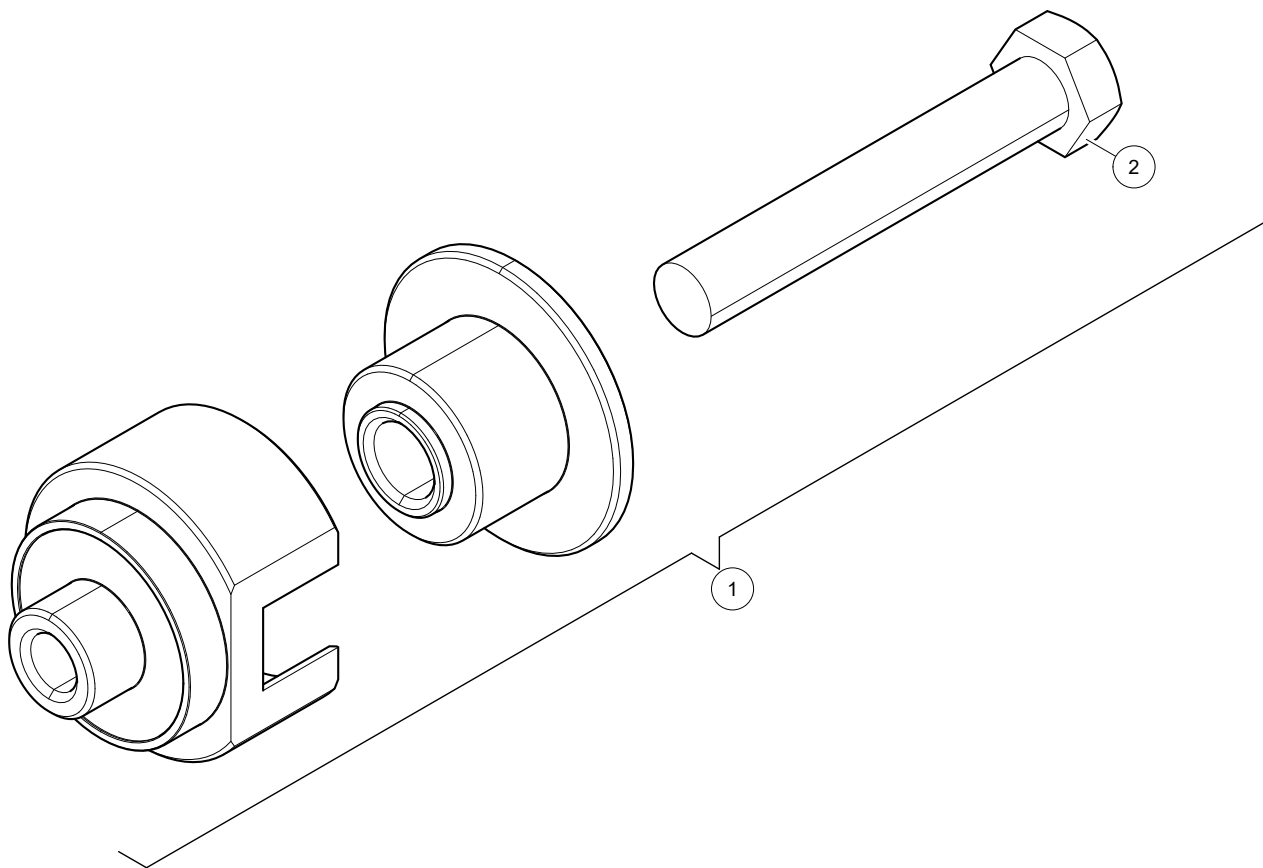




Astronaut A5 Tools 5.1X05.00XX-X 0003242094

| Ref. | Part No | Qty. | Description | Techn. info | Criticality | Remark |
|------|---------------|------|-------------|-------------|-------------|--------|
| 1 | 5.1004.7106.0 | 1 | Tool | | | |



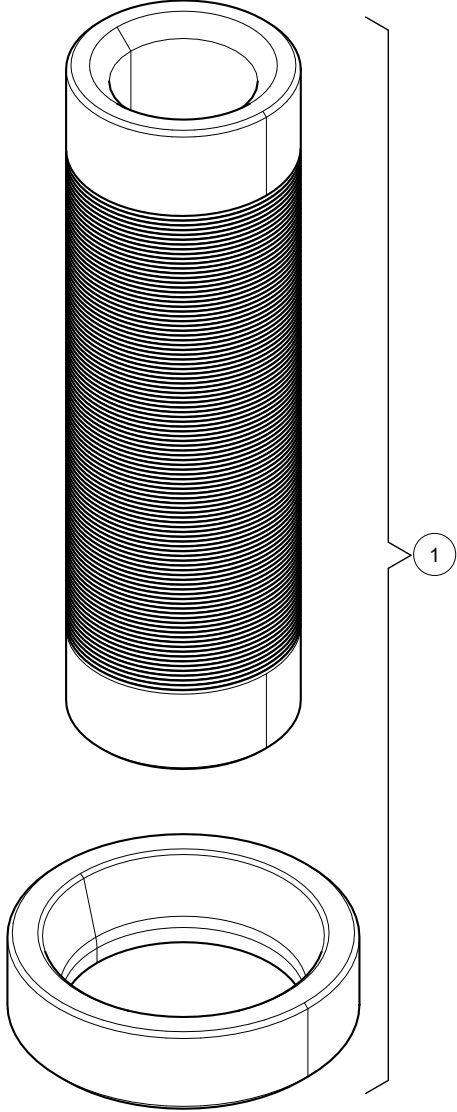




Astronaut A5 Tools 5.1X05.00XX-X 0003242094

| Ref. | Part No | Qty. | Description | Techn. info | Criticality | Remark |
|------|---------------|------|----------------|--------------------|-------------|--------|
| 1 | ##### | 1 | Not separately | | | |
| 2 | 9.1113.0083*5 | 1 | Bolt | M16x100 DIN931-8.8 | | |



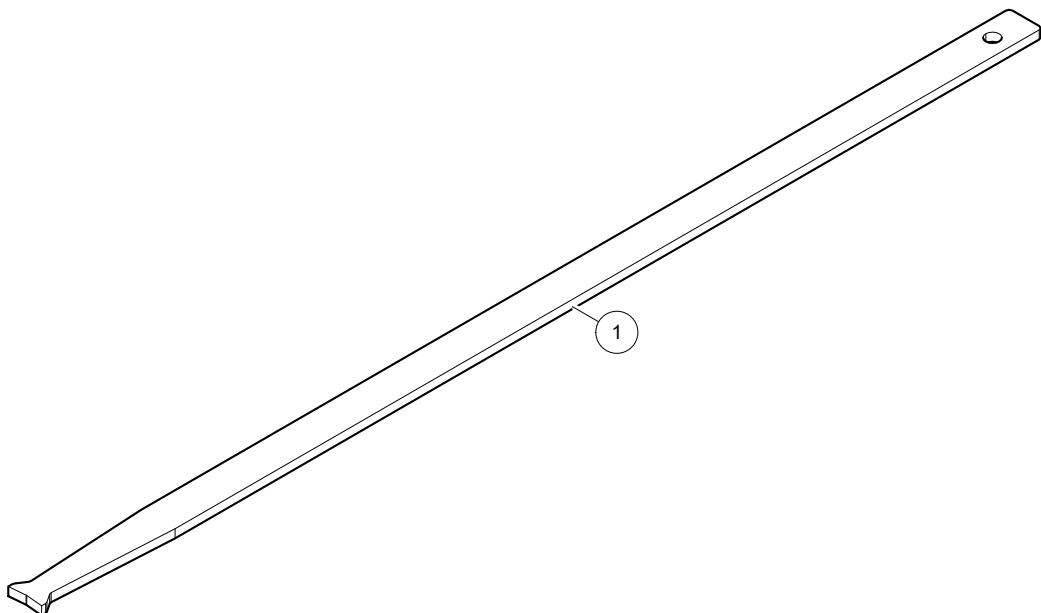




Astronaut A5 Tools 5.1X05.00XX-X 0003242094

| Ref. | Part No | Qty. | Description | Techn. info | Criticality | Remark |
|------|---------------|------|-------------|-------------|-------------|--------|
| 1 | 5.9000.1325.0 | 1 | Tool | | | |



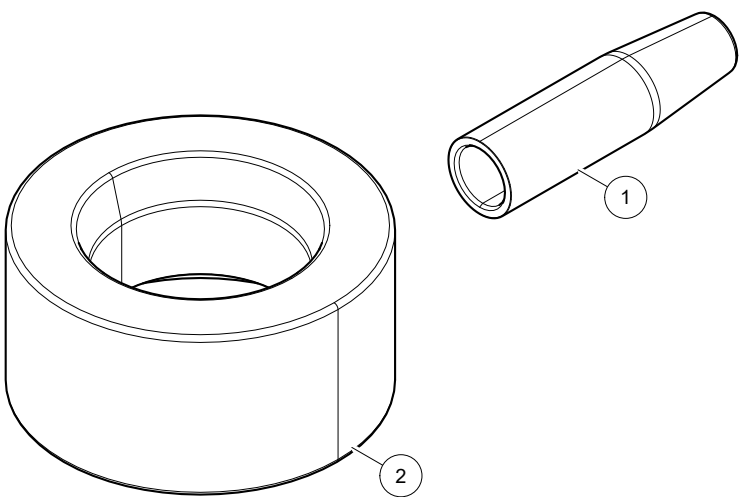


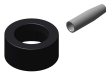
Astronaut A5 Tools 5.1X05.00XX-X 0003242094



| Ref. | Part No | Qty. | Description | Techn. info | Criticality | Remark |
|------|---------------|------|-------------|-------------|-------------|--------|
| 1 | 5.9000.1151.0 | 1 | Tool | | | |



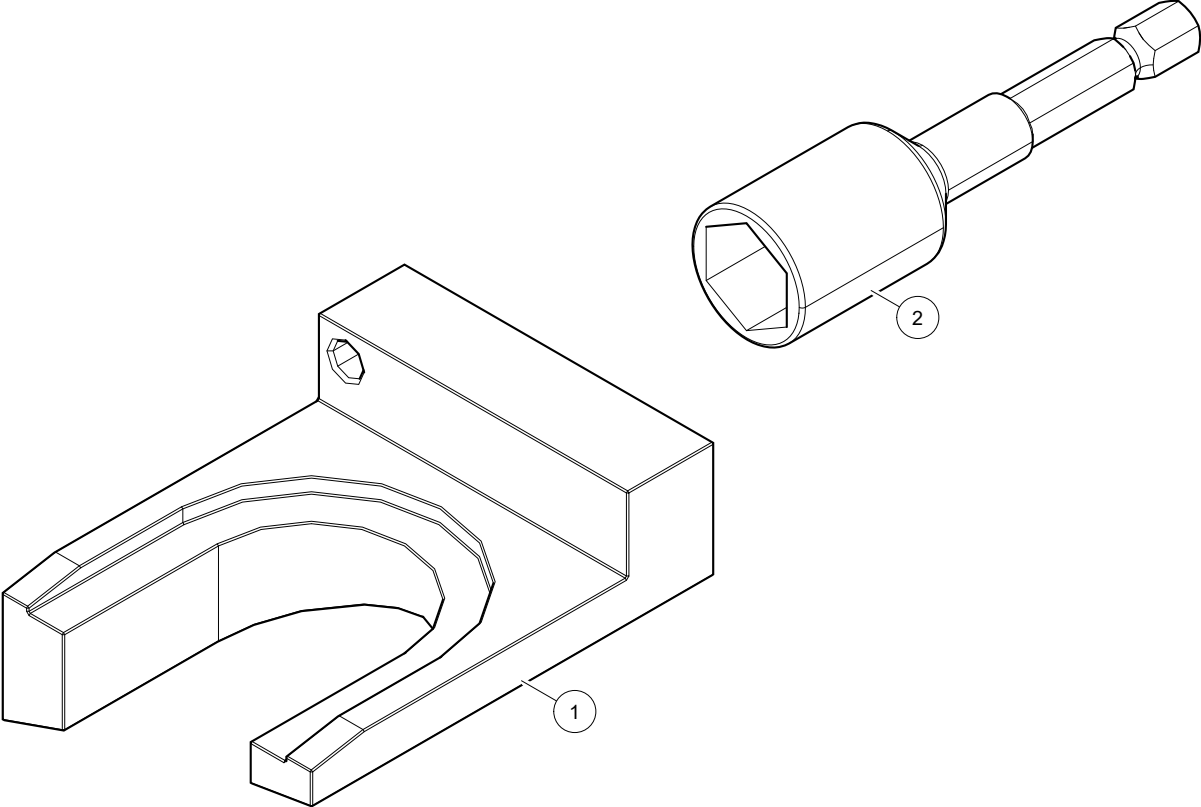




Astronaut A5 Tools 5.1X05.00XX-X 0003242094

| Ref. | Part No | Qty. | Description | Techn. info | Criticality | Remark |
|------|---------------|------|-------------|-------------------------------|-------------|--------|
| 1 | 5.1005.5331.0 | 1 | Guidance | FRONT COVER CYLINDER P1D-X040 | | |
| 2 | 5.1005.5332.0 | 1 | Sleeve | MOUNTING PISTON P1D-X040 | | |



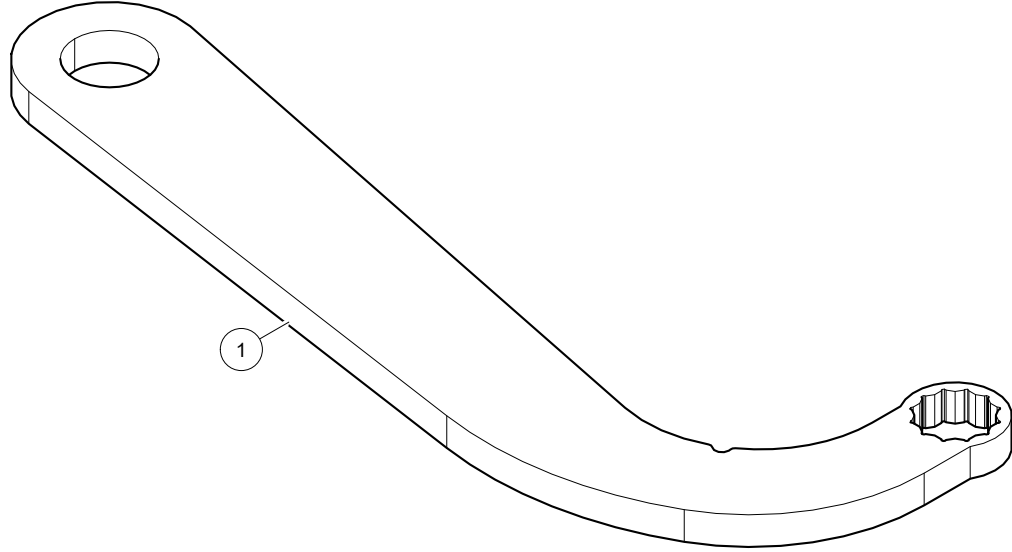




Astronaut A5 Tools 5.1X05.00XX-X 0003242094

| Ref. | Part No | Qty. | Description | Techn. info | Criticality | Remark |
|------|---------------|------|-------------|-----------------|-------------|--------|
| 1 | 5.1005.2868.0 | 1 | Tool | STARLOCK Tool | | |
| 2 | 9.1074.0522.0 | 1 | Tool | 13mm Socket Bit | | |



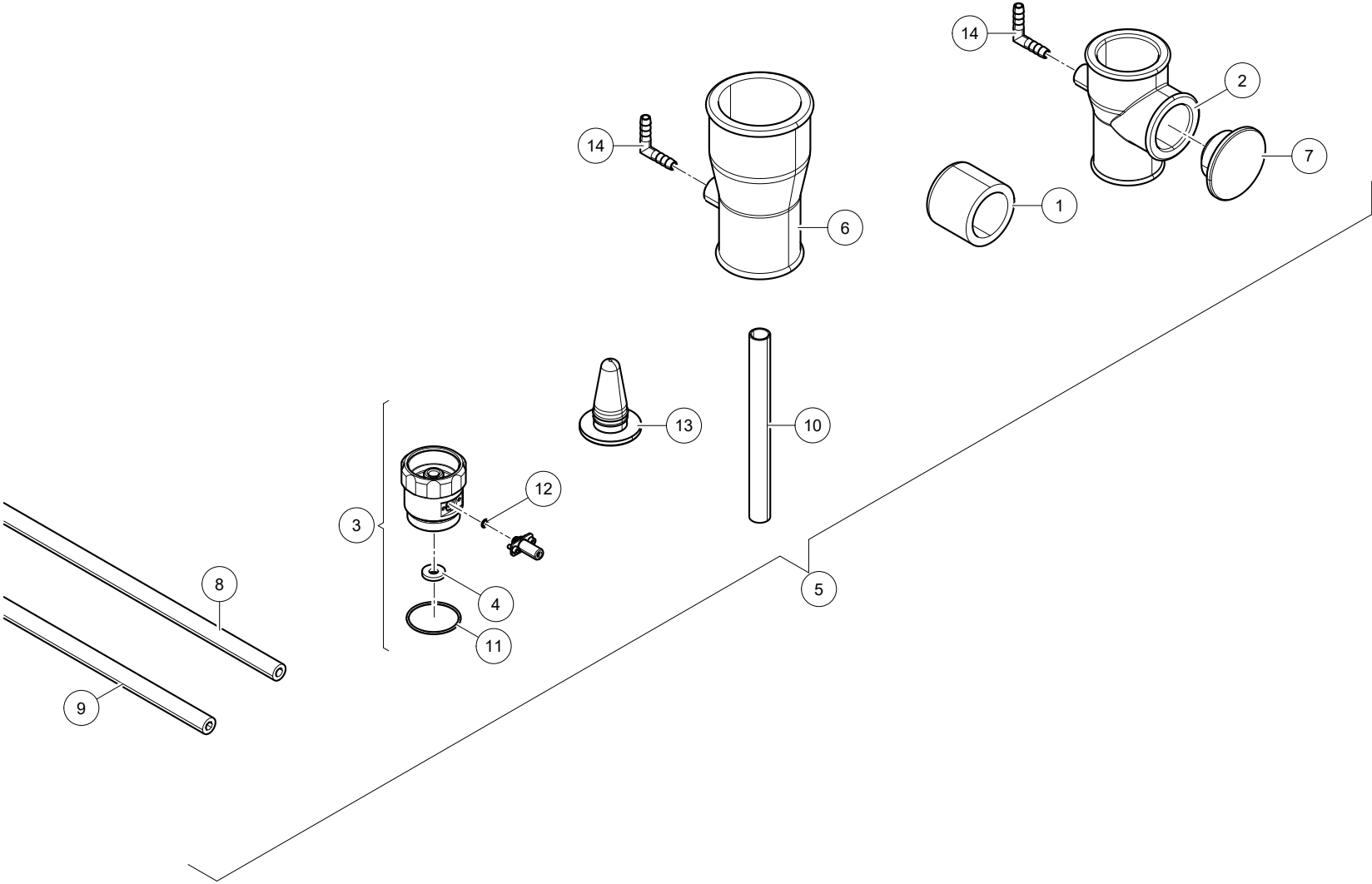




Astronaut A5 Tools 5.1X05.00XX-X 0003242094

| Ref. | Part No | Qty. | Description | Techn. info | Criticality | Remark |
|------|---------------|------|-------------|-----------------------------|-------------|--------|
| 1 | 5.9000.1348.0 | 1 | Tool | St.st. Actuator Milk Valves | | |



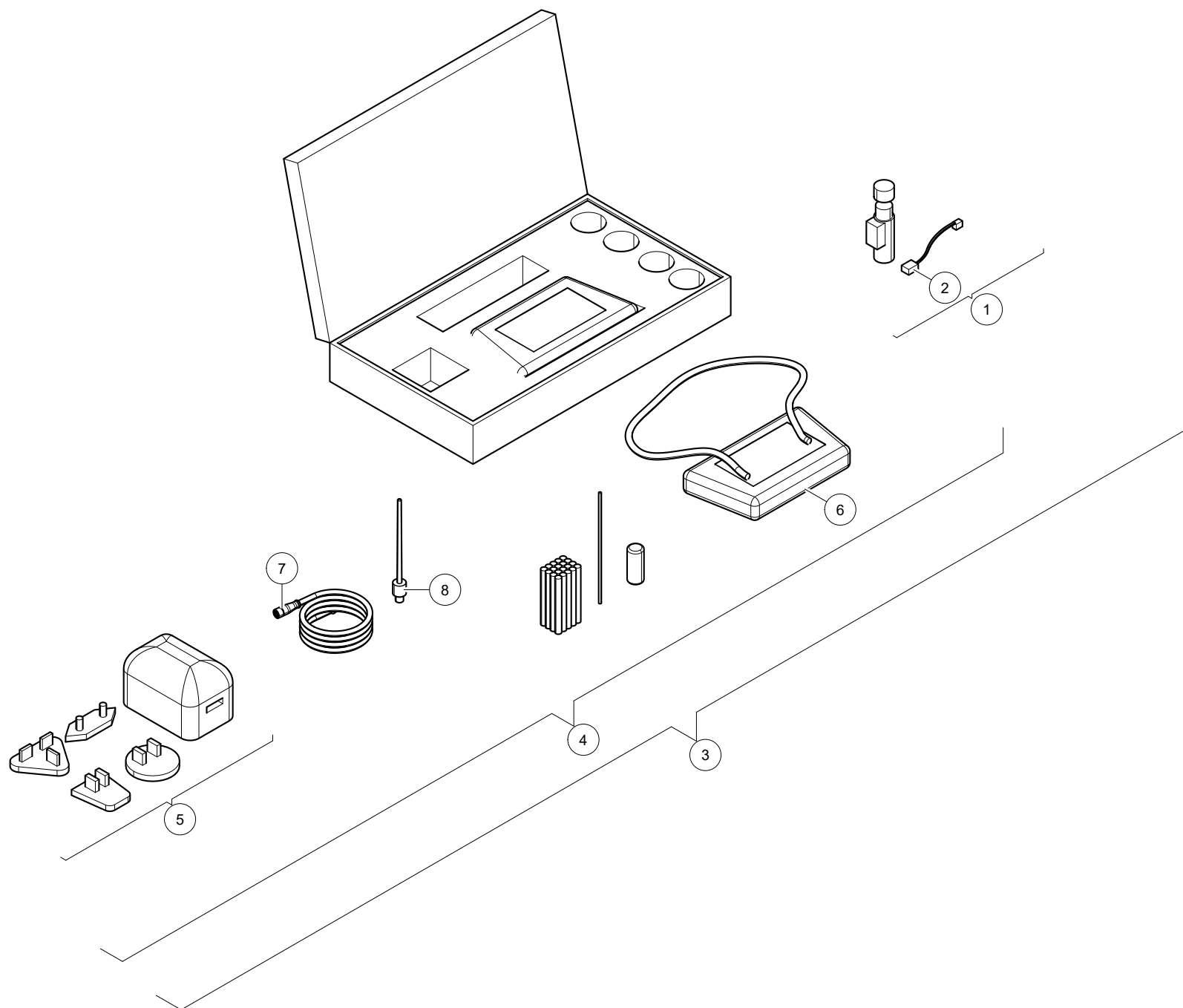




Astronaut A5 Tools 5.1X05.00XX-X 0003242094

| Ref. | Part No | Qty. | Description | Techn. info | Criticality | Remark |
|------|---------------|------|---------------------|----------------------------|-------------|--------|
| 1 | 5.1004.0970.0 | 2 | Locking cap | | | |
| 2 | 5.1004.6684.0 | 1 | T-coupling | Vacuum Measurements | | |
| 3 | 5.1004.6752.0 | 2 | Coupling piece | Pulsation measurement | | |
| 4 | 5.1004.6933.0 | 2 | Gasket | | | |
| 5 | 5.1005.3343.0 | 1 | Set | Vacuum and Pulsation tests | | |
| 6 | 5.1005.3345.0 | 1 | Connector | Flow Measurement Teat Cup | | |
| 7 | 5.1005.3346.0 | 1 | Plug | | | |
| 8 | 9.1185.0089.2 | 2 | Hose | 7x14mm SILICON | | |
| 9 | 9.1185.0089.2 | 1 | Hose | 7x14mm SILICON | | |
| 10 | ##### | 1 | Not separately | | | |
| 11 | 9.1043.0046.3 | 2 | O-ring | 37.82x1.78 NBR 70°Shore | | |
| 12 | ##### | 2 | Not separately | | | |
| 13 | 9.1185.0178.0 | 8 | Teat liner stop ISO | | | |
| 14 | 9.2018.0074.6 | 2 | Elbow | 8mm PA 2x hose socket | | |



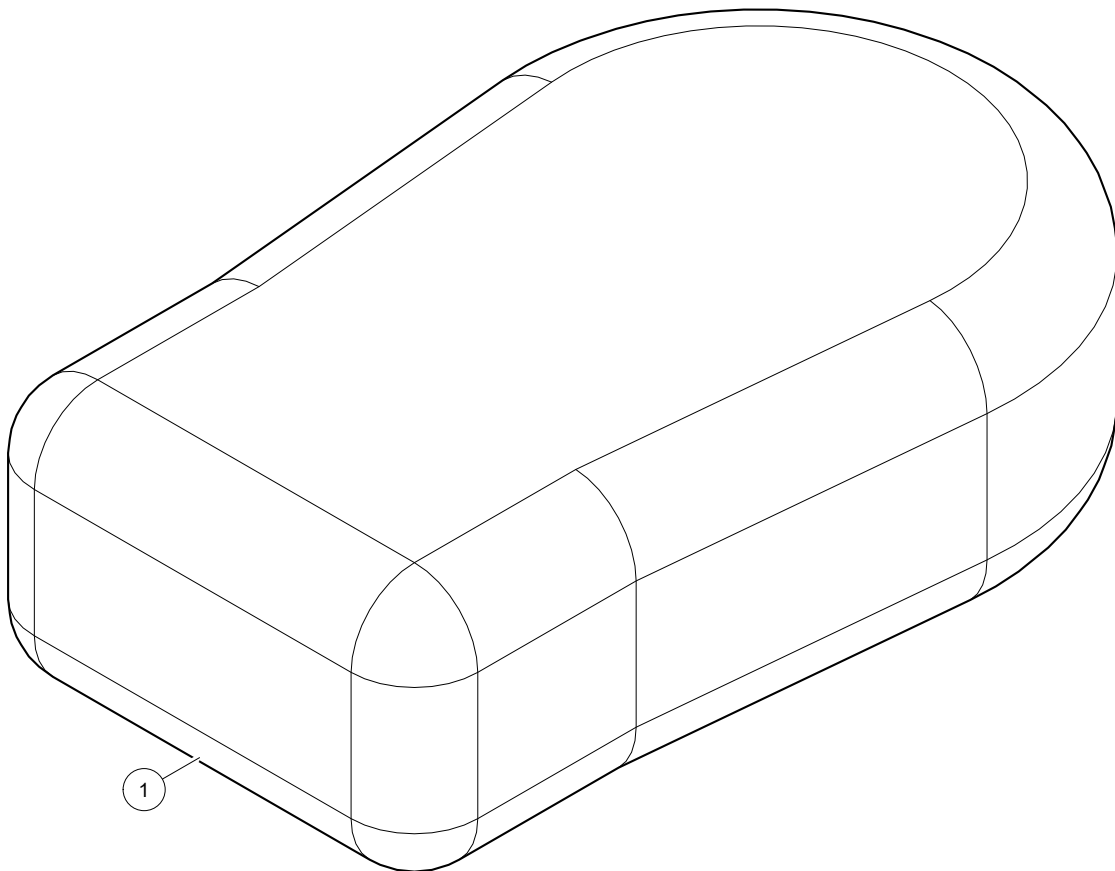




Astronaut A5 Tools 5.1X05.00XX-X 0003242094

| Ref. | Part No | Qty. | Description | Techn. info | Criticality | Remark |
|------|---------------|------|-------------------------------|--------------------------------------|-------------|--------|
| 1 | 9.1074.0050.0 | 1 | Meter | AIRFLOWSMETER 4.83.90.50030 ATV AGRI | | |
| 2 | 9.1074.0058.0 | 1 | Cable | 2.39.30.32745 ATV AGRI | | |
| 3 | 9.1074.0516.0 | 1 | Kit PT-VI incl. airflow meter | | | |
| 4 | 9.1074.0517.0 | 1 | Kit | PT-VI | | |
| 5 | 9.1074.0518.0 | 1 | Adapter | PT-VI | | |
| 6 | 9.1074.0519.0 | 1 | Cover | PROTECTION PT-VI | | |
| 7 | 9.1074.0526.0 | 1 | Cable | PT6 | | |
| 8 | 9.1074.0527.0 | 1 | Sensor | Tempertare | | |



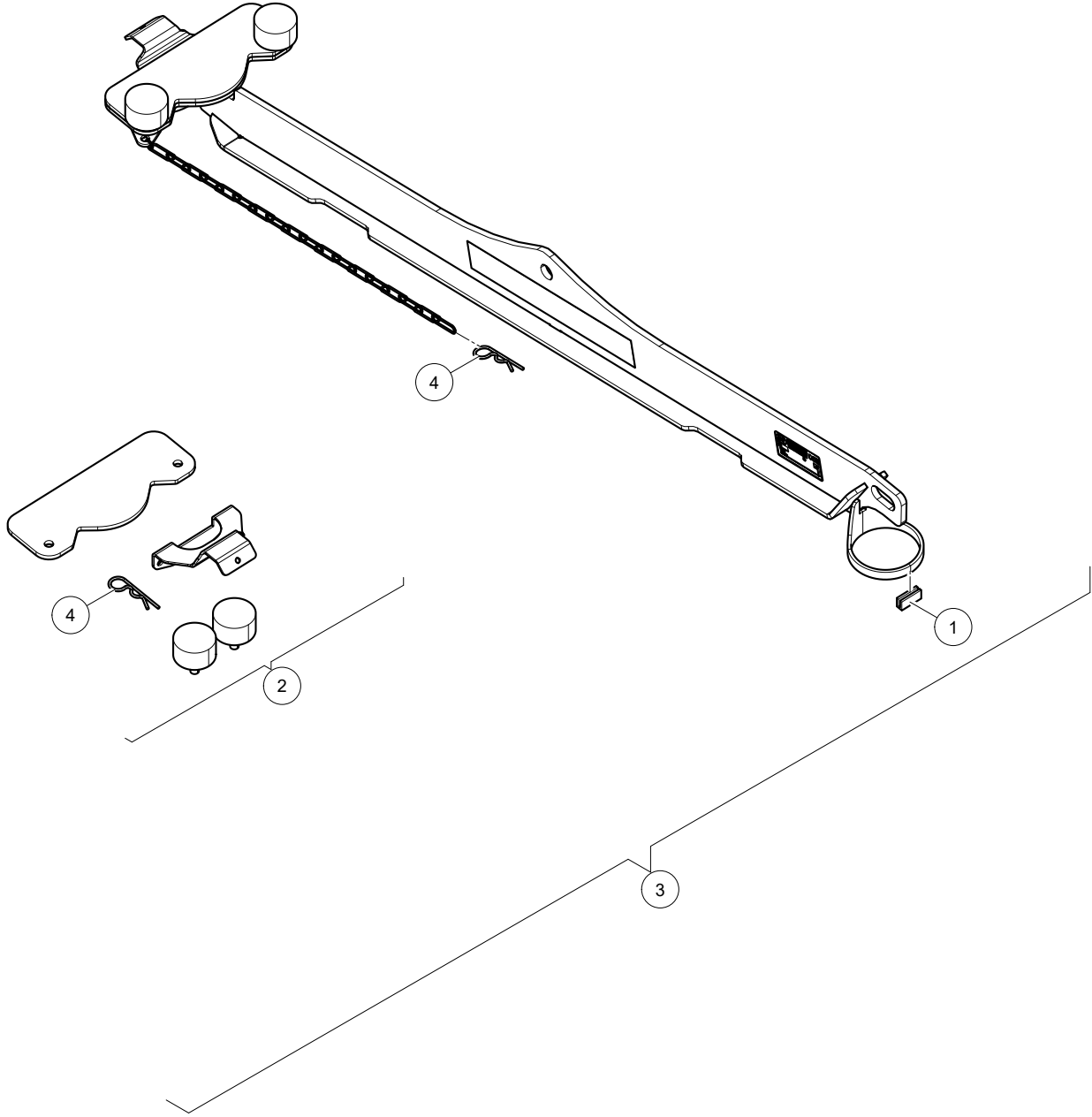


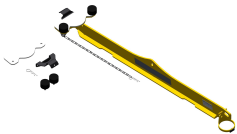


Astronaut A5 Tools 5.1X05.00XX-X 0003242094

| Ref. | Part No | Qty. | Description | Techn. info | Criticality | Remark |
|------|---------------|------|-------------|--------------|-------------|--------|
| 1 | 9.1185.1180.0 | 1 | Sensor | SCR Test Tag | | |



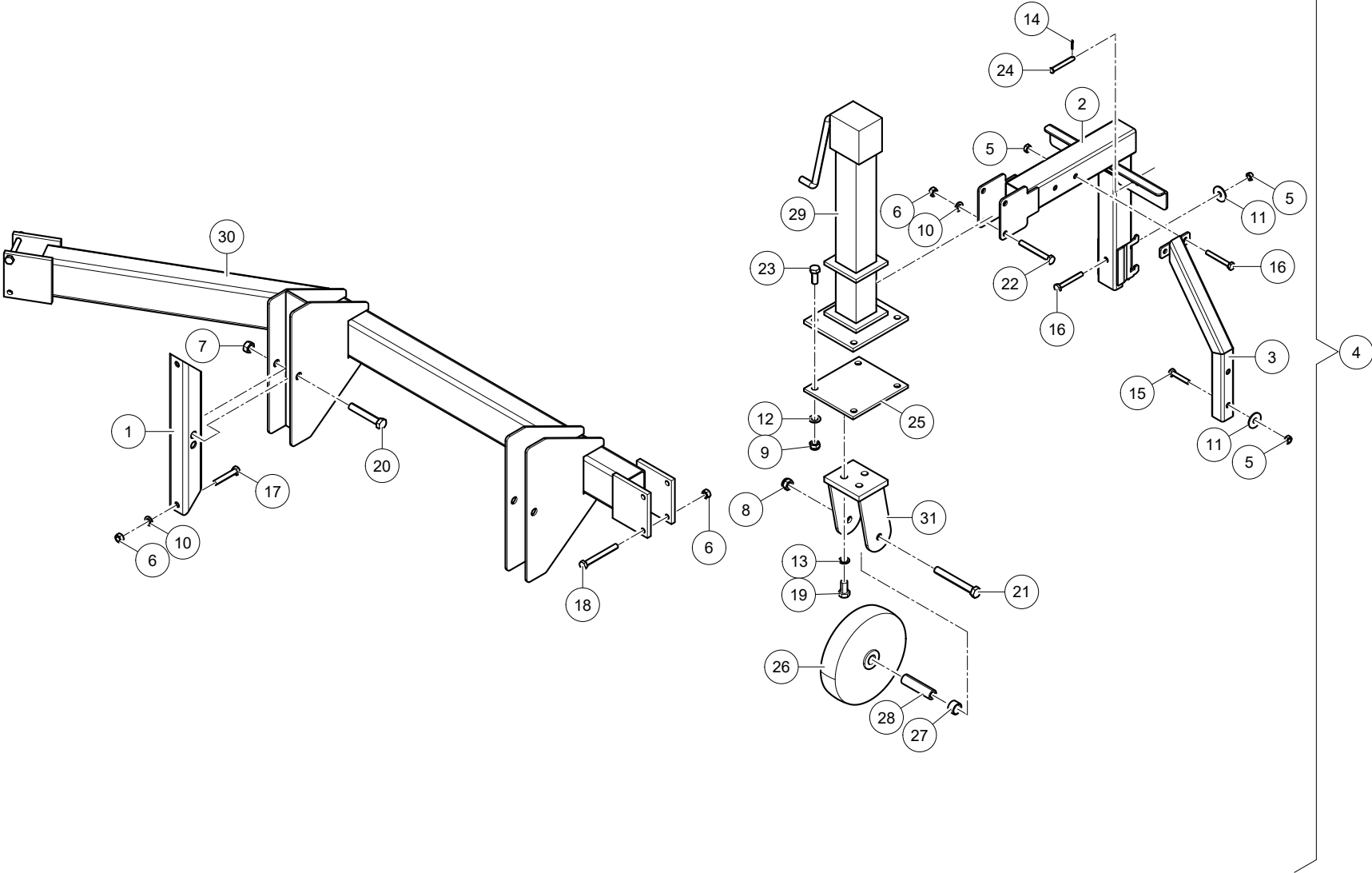




Astronaut A5 Tools 5.1X05.00XX-X 0003242094

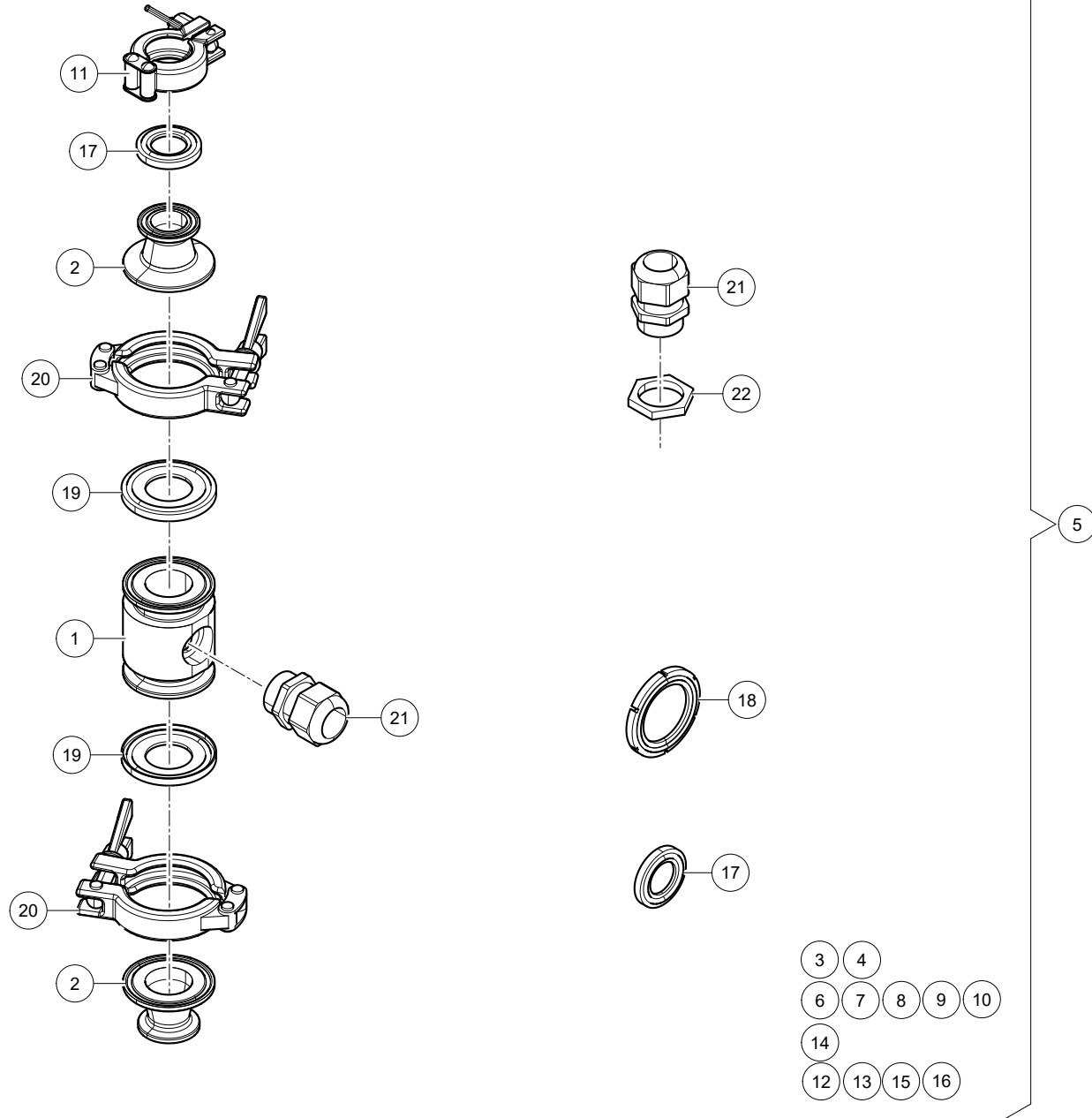
| Ref. | Part No | Qty. | Description | Techn. info | Criticality | Remark |
|------|---------------|------|----------------|-------------------------------|-------------|--------|
| 1 | 9.1073.0055.3 | 1 | Profile | B823 14x3x3 L=260 | | |
| 2 | 5.9000.1336.0 | 1 | Set | Hoisting beam Astronaut A4/A5 | | |
| 3 | 5.9000.1338.0 | 1 | Tool | Hoisting beam Astronaut A4/A5 | | |
| 4 | 9.1124.0010.5 | 2 | Locking spring | | | |

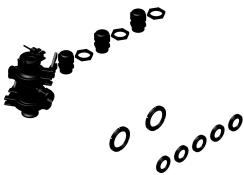






| Ref. | Part No | Qty. | Description | Techn. info | Criticality | Remark |
|------|---------------|------|------------------|--------------------------|-------------|--------|
| 1 | 5.1003.9025R0 | 2 | Tube | | | |
| 2 | 5.1004.6051R0 | 1 | Support | WHEEL | | |
| 3 | 5.1004.6052R0 | 1 | Support | WHEEL | | |
| 4 | 5.1004.6060.0 | 1 | Wheel assembly | | | |
| 5 | 9.1029.0005*4 | 5 | Nut | M10 DIN934-8 | | |
| 6 | 9.1029.0008*0 | 10 | Nut | M12 DIN934-8 | | |
| 7 | 9.1029.0013*5 | 2 | Nut | M16 DIN934-8 | | |
| 8 | 9.1030.0014*5 | 3 | Nut | M16 DIN985-8 | | |
| 9 | 9.1030.0015*6 | 12 | Nut | M14 DIN985-8 | | |
| 10 | 9.1048.0012*6 | 10 | Washer | A13 DIN125-St | | |
| 11 | 9.1048.0041*0 | 3 | Washer | A13 DIN 9021 | | |
| 12 | 9.1048.0053*5 | 12 | Washer | A15 DIN125-St | | |
| 13 | 9.1051.0004.2 | 9 | Serr.lock washer | A16.5 DIN6798 | | |
| 14 | 9.1072.0025.2 | 1 | Split pin | 3.2x16 DIN94 s/s | | |
| 15 | 9.1113.0036*0 | 2 | Bolt | M10x55 DIN931-8.8 | | |
| 16 | 9.1113.0042*6 | 3 | Bolt | M10x80 DIN931-8.8 galv | | |
| 17 | 9.1113.0059*2 | 4 | Bolt | M12x70 DIN931-8.8 | | |
| 18 | 9.1113.0066*2 | 4 | Bolt | M12x110 DIN931-8.8 galv. | | |
| 19 | 9.1113.0076*5 | 9 | Bolt | M16x30 DIN933-8.8 | | |
| 20 | 9.1113.0083*5 | 2 | Bolt | M16x100 DIN931-8.8 | | |
| 21 | 9.1113.0086*1 | 3 | Bolt | M16x130 DIN931-8.8 | | |
| 22 | 9.1113.0136*2 | 2 | Bolt | M12x100 DIN931-8.8 | | |
| 23 | 9.1113.0178*2 | 12 | Bolt | M14x35 DIN933-10.9 | | |
| 24 | 9.1115.0101*0 | 1 | Pin | | | |
| 25 | 9.1180.0503.1 | 3 | Bearing | | | |
| 26 | 9.1180.0504.2 | 3 | Wheel | | | |
| 27 | 9.9007.0118.0 | 6 | Bushing | | | |
| 28 | 9.9007.0119.0 | 3 | Shaft | | | |
| 29 | 9.9007.0120R0 | 3 | Support | LEG WHEEL | | |
| 30 | 9.9007.0150R0 | 1 | Support | WHEEL BRIDGE | | |
| 31 | 9.9007.0180R0 | 3 | Bracket | WHEEL | | |





Astronaut A5 Tools 5.1X05.00XX-X 0003242094

| Ref. | Part No | Qty. | Description | Techn. info | Criticality | Remark |
|------|---------------|------|---------------------|----------------------------------|-------------|--------|
| 1 | 5.1005.5286.0 | 1 | Housing | | | |
| 2 | 5.1005.5287.0 | 2 | Adapter | ND20-ND25 | | |
| 3 | 5.1005.5298.0 | 1 | Cap | Mueller milktank 2.5" probe | | |
| 4 | 5.1005.5299.0 | 1 | Cap | Mueller milktank 2.0" probe | | |
| 5 | 5.1005.5325.0 | 1 | Analytical tool kit | | | |
| 6 | 5.9700.2452.0 | 1 | Kit | Sample kit for chemicals 222191 | | |
| 7 | 5.9700.4850.0 | 1 | Set | pH-Fix 0-14 indicator sticks | | |
| 8 | 5.9700.4851.0 | 1 | Set | VISOCOLOR ECO Hardness test | | |
| 9 | 5.9700.4852.0 | 1 | Set | VISOCOLOR ECO Iron1 colorimetr | | |
| 10 | 5.9700.4853.0 | 1 | Set | VISOCOLOR HE Chloride CL500 test | | |
| 11 | 9.1066.0065.6 | 1 | Tri clamp | NW 10/20 | | |
| 12 | 9.1074.0060.0 | 1 | Tool | Blacklight Tank 007 | | |
| 13 | 9.1074.0061.0 | 1 | Tool | Flashlight Tank 007 | | |
| 14 | 9.1074.0062.0 | 1 | Carriage | Rolling workshop toolbox | | |
| 15 | 9.1074.0529.0 | 1 | Conductivity tool | | | |
| 16 | 9.1074.0533.0 | 1 | Sensor | TetraCon© 325 | | |
| 17 | 9.1130.0028.3 | 6 | Tri clamp | | | |
| 18 | 9.1130.0038.6 | 2 | Sealing ring | ø35.3 | | |
| 19 | 9.1130.0092.0 | 2 | Gasket | | | |
| 20 | 9.1185.0189.4 | 2 | Clamp | | | |
| 21 | 9.1186.0250.1 | 4 | Swivel | M25x1.5 | | |
| 22 | 9.1186.0251.2 | 3 | Lock nut | M25x1.5 | | |





INTENTIONALLY BLANK

Lely Industries N.V.

Cornelis van der Lelylaan 1

NL-3147 PB Maassluis

Tel +31 (0)88 - 12 28 221

Fax +31 (0)88 - 12 28 222

